

The Severe HTN Algorithm

Moving beyond recognition to timely response, evidence-based intervention, and appropriate escalation of care



This research was, in part, funded by the National Institutes of Health (NIH) Agreement OT2HL158287. The views and conclusions contained in this document are those of the authors and should not be interpreted as representing the official policies, either expressed or implied, of the NIH.



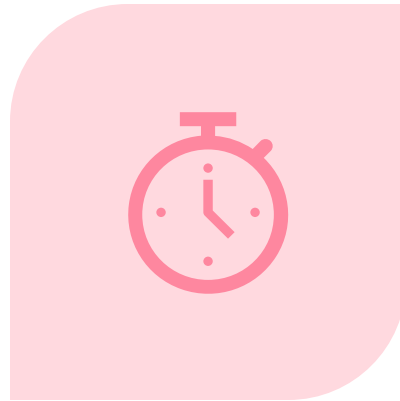
Objectives

- By the end of this session the implementation team will begin adapting the severe HTN algorithm to fit the clinic's capacity.

Roles for today's session



FACILITATOR- ACHIEVE
NURSE COORDINATOR



TIMEKEEPER-



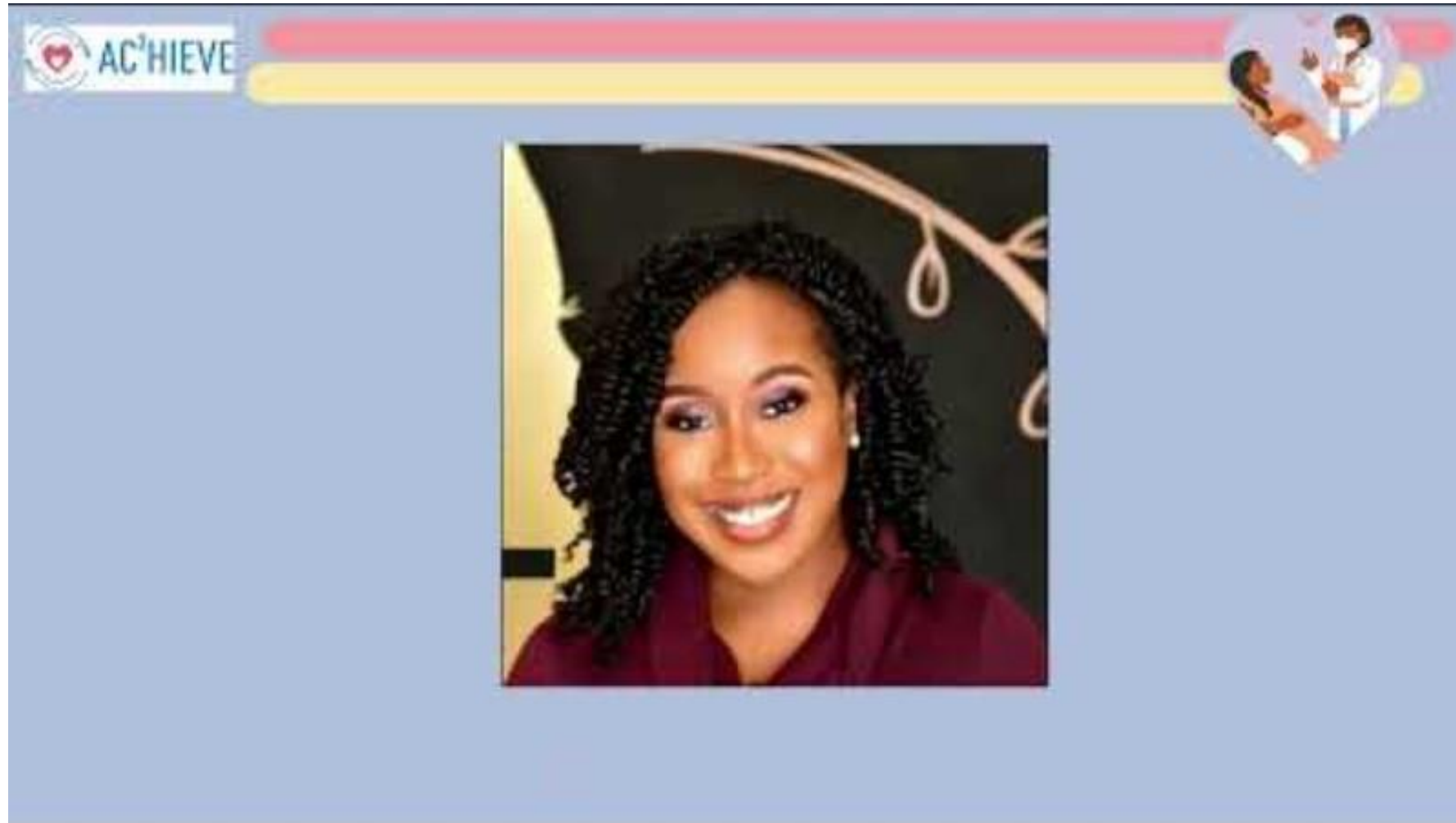
RECORDER-

Agenda

- Last meeting, we:
 - *Reviewed sample BP Measurement policies*
 - *Explored if and how those policies could be integrated into current clinic practices.*
- This meeting, we will:
 - *Ground our purpose*
 - *Check-in on where the clinic is at in developing the BP Measurement Policy*
 - *Introduce the Severe HTN algorithm*
 - *Begin adapting the Severe HTN algorithm to fit this clinic*
 - *Introduce Conversation Guides*
 - *Plan next steps*



Promoting Quality Care – Why It Matters



Check-in on BP Measurement Policy



How did it go?

Thoughts/feedback after completing the BP Training and introducing the BP Measurement policies to others. . .



Major challenges?

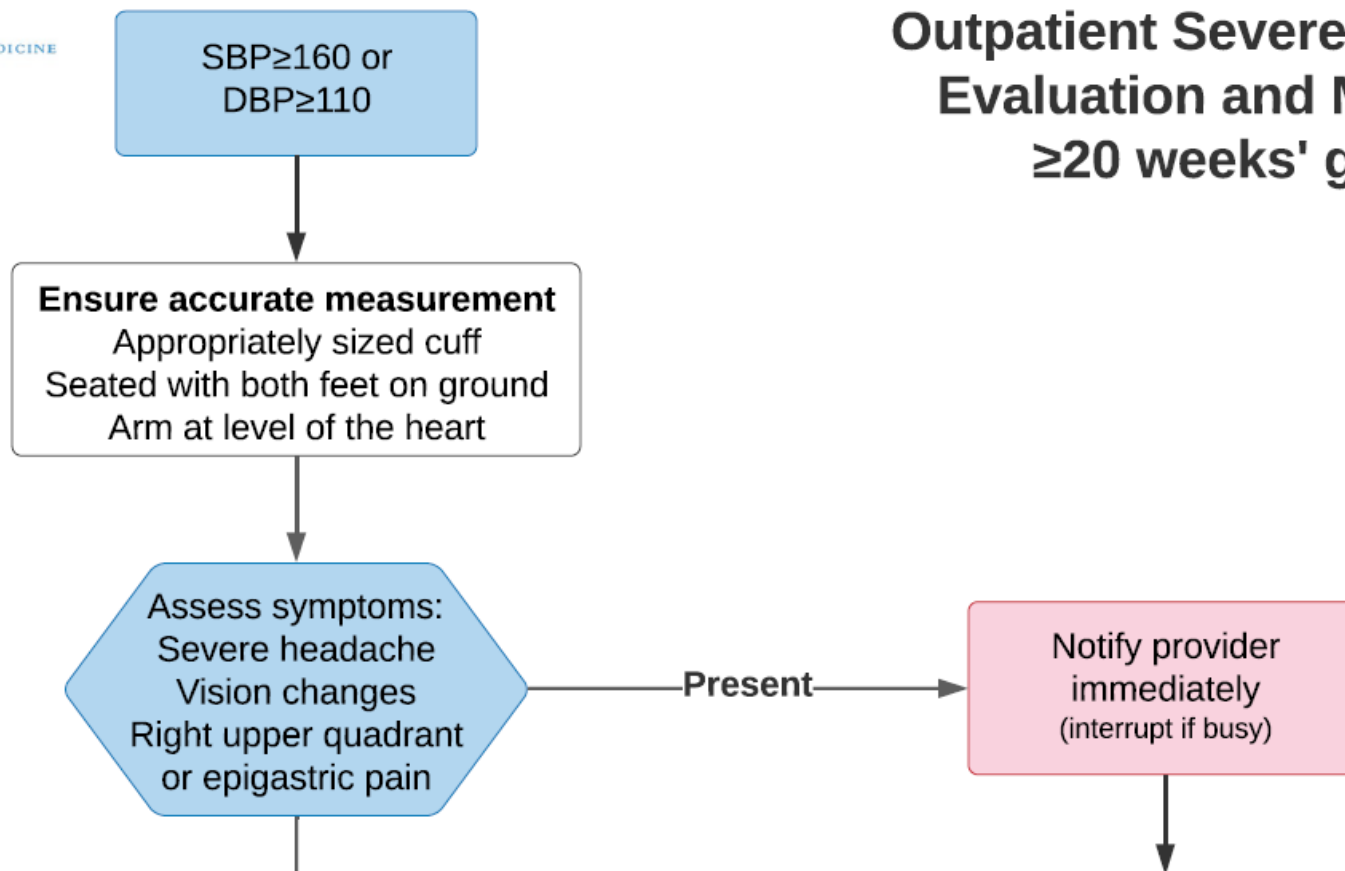
Ideas for overcoming those challenges?



Next steps

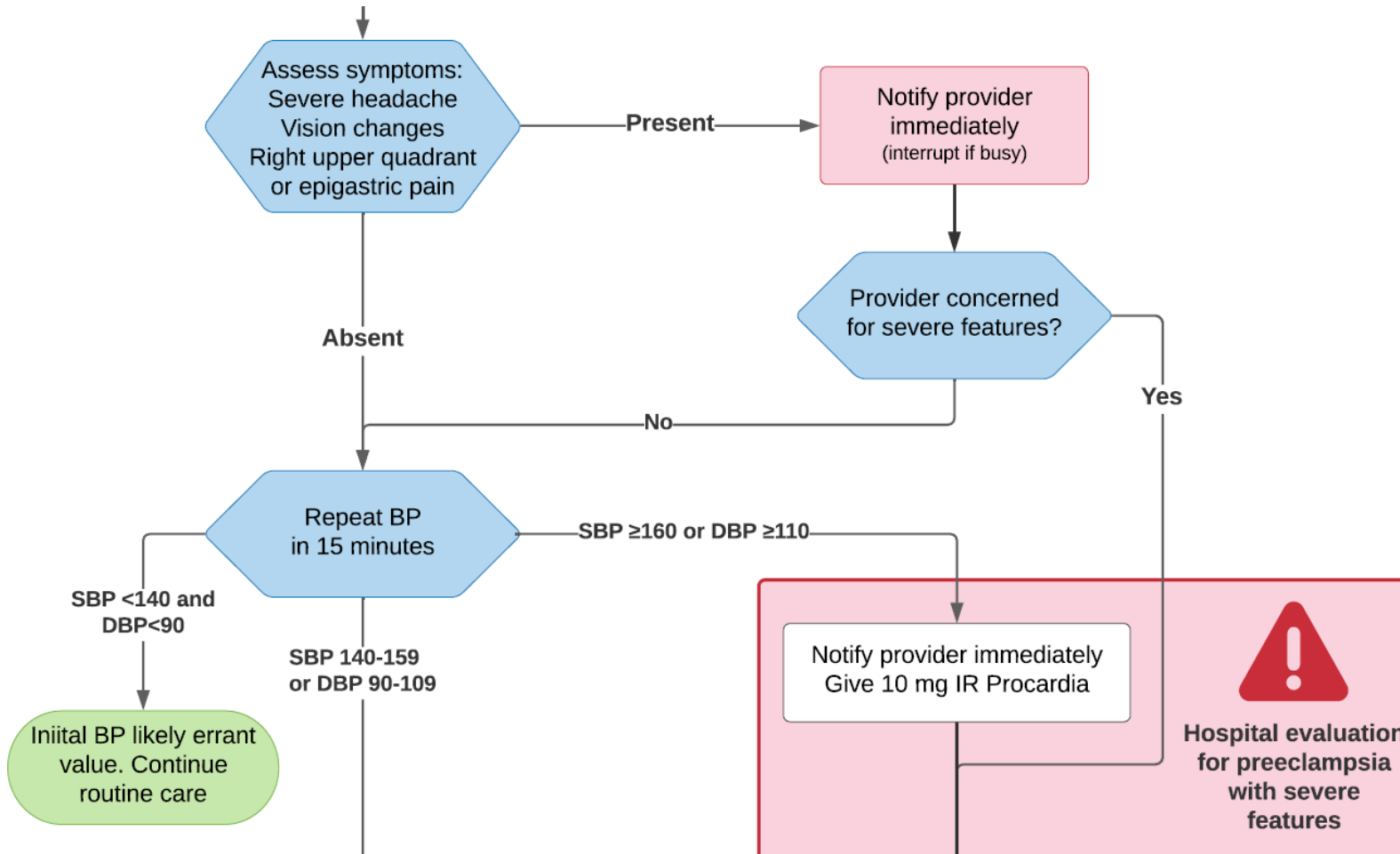
Do we have a finalized draft? Whose stamp of approval is needed?

Severe HTN Algorithm

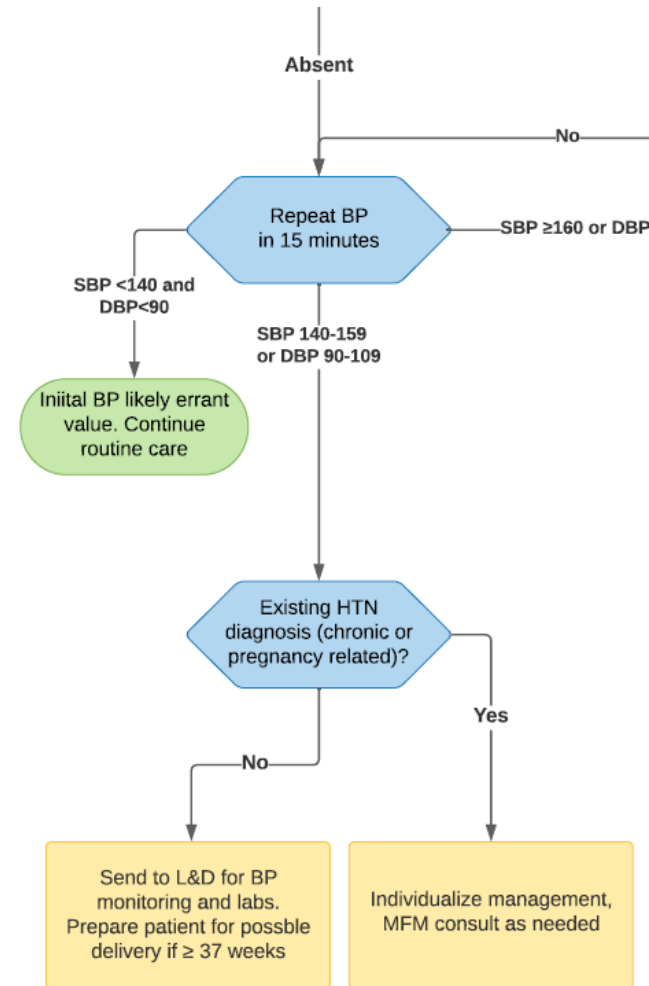


**Outpatient Severe Hypertension
Evaluation and Management
≥20 weeks' gestation**

Severe HTN Algorithm

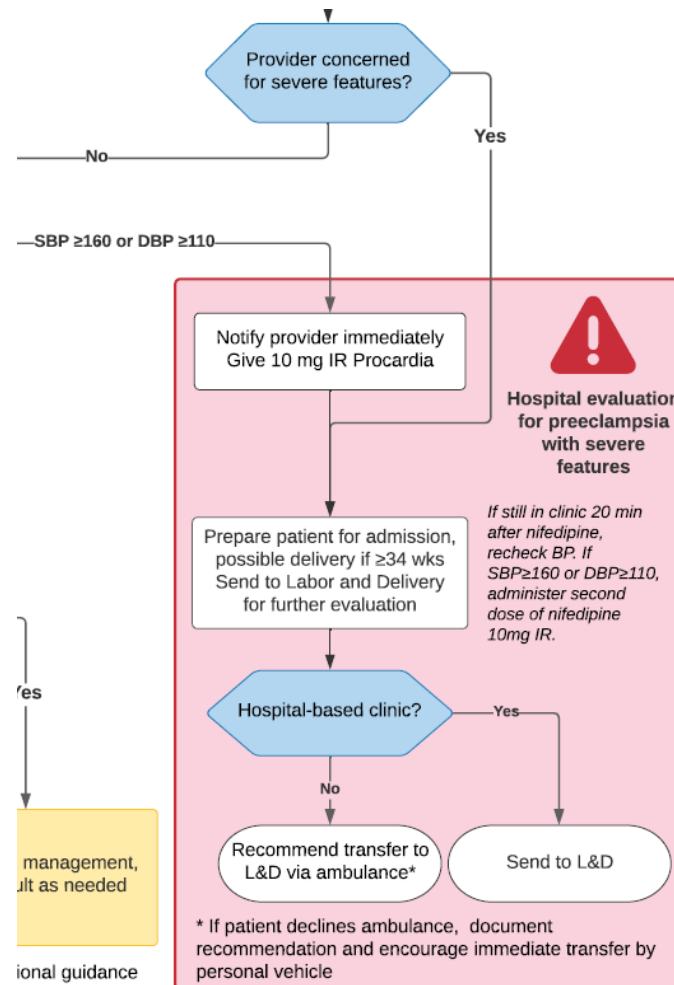


Severe HTN Algorithm



See referenced ACOG Practice Bulletins for additional guidance

Severe HTN Algorithm



Plan for Next Steps

- Finalize BP Measurement Protocol and begin using it in the clinic; be prepared to report out how this goes.
- Draft/Adapt Severe HTN Algorithm to fit clinic and bring to next session.

Revisiting our Objectives

- By the end of this session the implementation team will begin adapting the severe HTN algorithm to fit the clinic's capacity.

Evaluating Today's Progress

- Did we hit our objective?
- What went well today?
- What would help improve the next meeting?

THANK YOU!

